

For more information
Please contact

Habitat for Humanity
South Sarasota, Inc.
280 Alligator Drive
Venice, FL 34293

Yvonne Heckler
493-6606

yheckler@hfhssarasotaco.org

Please visit our website for additional
information and guidelines:
www.habitatsouthsarasota.org



Mission Statement

Habitat for Humanity South Sarasota County, Inc. works in partnership with God's people in need to build affordable, safe, decent housing



GARDEN PARK

DUPLEX TOWNHOMES & VILLAS



You can own one of these affordable
energy efficient homes !

*Garden Park is located on 2.11
Acres West of US 41 in
Laurel/Nokomis*

What features will Garden Park have?

- Three bedrooms, two baths
- Energy efficient appliances
- Front porch/rear patio
- Storage area
- Carpet/Laminate flooring

Other Amenities:

- Landscaped park and play area
- Park, pond or woodland view
- Ample parking spaces (including handicapped)
- Sidewalks
- Easy access to I-75 and US 41
- Close to schools, shopping, churches, doctors
- Two miles to Gulf of Mexico

How will Garden Park be Constructed?

- Wind resistant paneled walls
- Low E glass (tinted)
- Mold resistant materials
- Foam insulation in attic

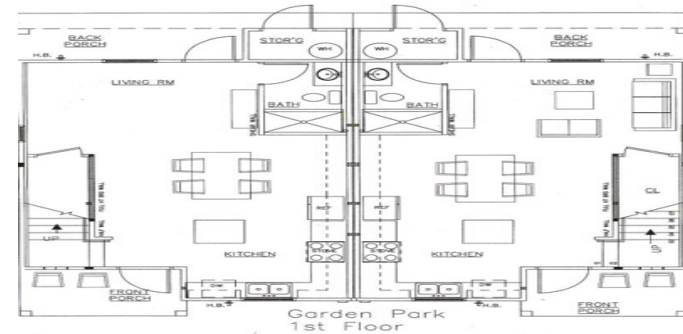
Who would qualify for Garden Park?

You may qualify if:

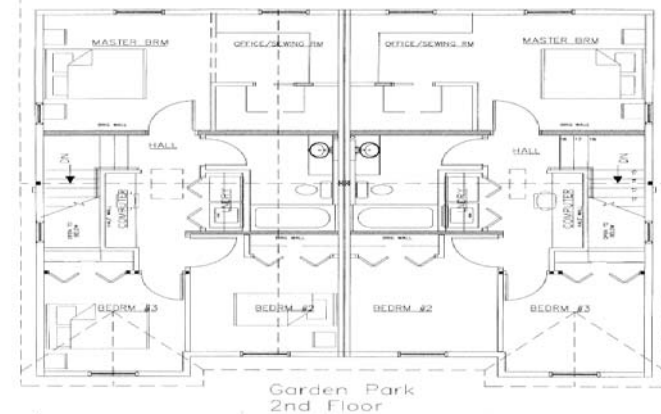
- You are a first time homebuyer
- You have lived or worked in South Sarasota County (includes Osprey, Laurel, Nokomis, Venice, North Port and Englewood) for the past year.
- Your current housing is unsafe, unsanitary, overcrowded, poorly maintained, transitional, unaffordable, subsidized OR you have been unable to secure a conventional mortgage.
- You have sustainable income and meet certain income guidelines.
- You are willing to partner with Habitat by putting in volunteer hours known as "sweat equity".

All home mortgages are scaled based on income and sold to partner families at 0% interest

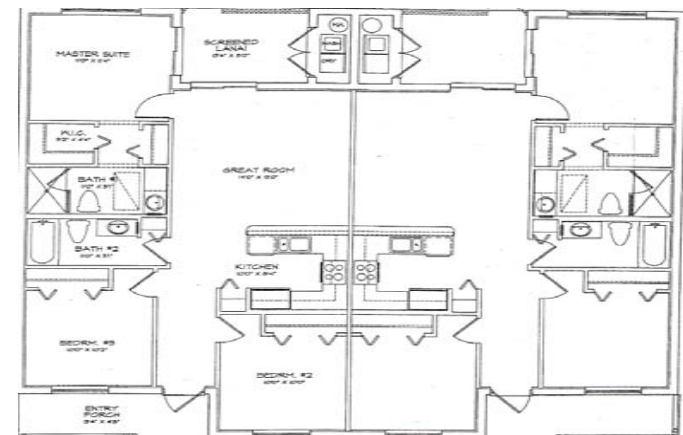
Town Home 1st Floor Plan



Town Home 2nd Floor Plan



Attached Villa Floor Plan



FLOOR PLAN: ATTACHED VILLA "A"